

APH: **464.4** CDL: **13.800**

GPH: **525.7** CertNo: **015/22**

BOAT

Class **More 55**
Designer **Cosutti**
Builder **More brodovi doo**
Age date **03/2016**
Series date **02/2015**
Offset file **MORE55.off**
Data file **CRO2564**

HULL

Length Overall **15.995 m**
Maximum Beam **5.016 m**
Draft **2.760 m**
Displacement **16,508 kg**
DLR **4.7938**
IMS Division **Cruiser/Racer**
Dynamic Allowance **0.211%**
Age Allowance **0.228%**

PROPELLER

Installation **Strut**
Type **Folding 3 blades**
Diameter **0.430m**

CREW

Maximum weight **1,239 kg**
Minimum weight **929 kg * when applied**
Non Manual Power
Crew Arm Extension

SAIL AREAS (m²)

	Measured	Rated
Mainsail	82.32	83.23
Headsail Luffed	71.20	71.20
Headsail Flying		

Symmetric
Asymmetric **205.19 205.19**
(All asymmetric spinnakers with SHW/SFL > 85%)

STORM SAIL AREAS (m²)

Trysail **26.02**
Storm Jib **22.48**
Heavy Weather Jib **60.68**

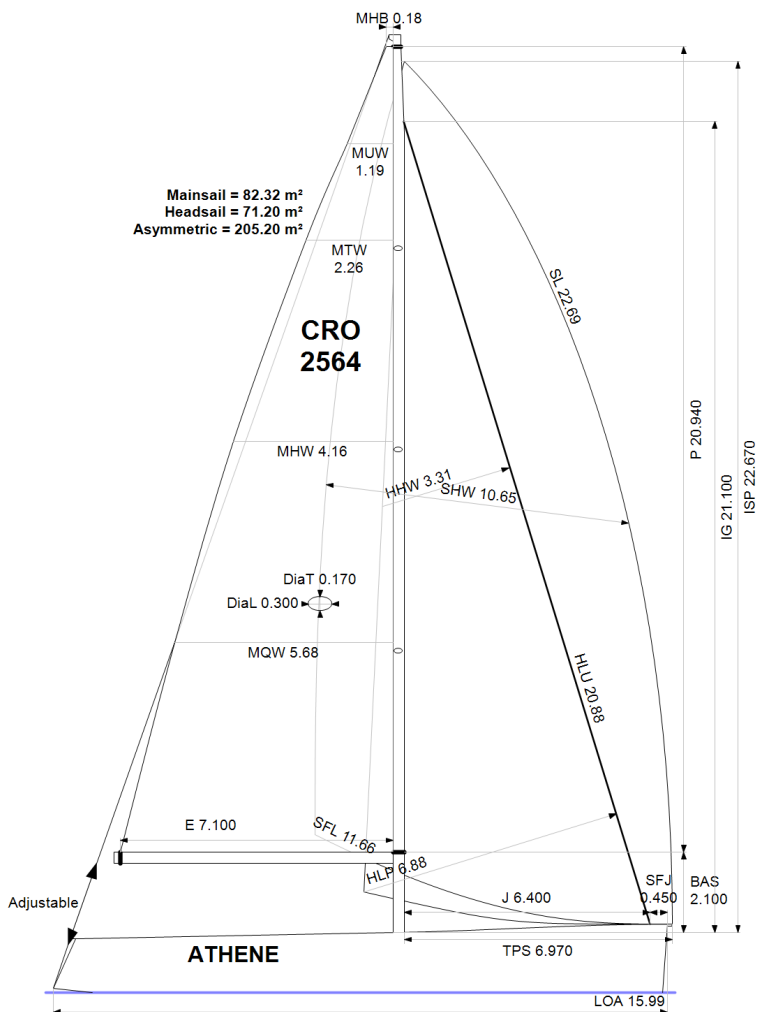
SAIL LIMITS

Headsails **7**
Spinnakers **5**

STABILITY

Righting Moment **572.6 kg-m**
Stability Index **N/A**

The owner and any other person in charge is responsible that boat is complying with her certificate in accordance with RRS 78.1 and ORC Rule 304.



Rated boat velocities in knots

Wind Velocity	6 kt	8 kt	10 kt	12 kt	14 kt	16 kt	20 kt
Beat Angles	44.2°	42.6°	41.7°	40.6°	39.6°	39.0°	38.8°
Beat VMG	3.85	4.77	5.50	6.01	6.24	6.37	6.54
52°	5.99	7.25	8.23	8.76	8.98	9.08	9.19
60°	6.41	7.66	8.56	9.01	9.25	9.36	9.46
75°	6.77	8.00	8.78	9.20	9.52	9.77	10.03
90°	6.69	8.00	8.92	9.29	9.59	9.96	10.63
110°	6.62	8.11	9.05	9.59	10.07	10.42	11.02
120°	6.43	7.91	8.92	9.48	10.04	10.66	11.62
135°	5.75	7.19	8.39	9.11	9.62	10.19	11.56
150°	4.84	6.14	7.29	8.30	8.96	9.36	10.14
Run VMG	4.19	5.32	6.32	7.19	7.76	8.12	9.10
Gybe Angles	142.6°	145.3°	147.8°	149.3°	150.5°	152.0°	175.7°



Club
Certificate
2022

Boat
Athene
CRO 2564

Hrvatski jedriličarski savez
Osječka 11
21000 Split
CROATIA



Time Allowances in secs/NM							
Wind Velocity	6 kt	8 kt	10 kt	12 kt	14 kt	16 kt	20 kt
Beat VMG	934.0	755.0	654.0	599.0	576.6	565.4	550.6
52°	601.0	496.2	437.2	410.9	401.0	396.3	391.7
60°	561.6	470.0	420.7	399.5	389.4	384.7	380.4
75°	532.1	450.1	410.1	391.1	378.2	368.5	359.0
90°	537.7	449.8	403.4	387.5	375.4	361.5	338.6
110°	544.1	444.0	397.7	375.6	357.3	345.7	326.7
120°	560.2	454.9	403.6	379.6	358.5	337.6	309.7
135°	625.6	500.7	429.3	395.2	374.3	353.4	311.6
150°	744.5	586.0	493.6	433.9	402.0	384.7	355.1
Run VMG	859.7	676.6	569.9	501.0	463.9	443.5	395.4
Selected Courses							
Windward / Leeward	896.8	715.8	612.0	550.0	520.3	504.4	473.0
All purpose	683.5	553.7	482.3	444.1	423.7	410.4	388.4

Single Number Scoring Options		
Course	Time On Distance	Time On Time
Windward / Leeward	582.0	1.0310
All purpose	464.4	1.2919

Data in **meters/kilograms (Metric)**

HULL AND APPENDAGES (Lightship Trim)

Class	More 55	LOA	15.995	VCGD	0.181
Measurement	29/04/2016	Max. Beam	5.016	VCGM	0.136
HIN		Draft	2.760	RM Measured (kg·m)	572.6
Plan review		Displacement	16,508	RM Default (kg·m)	572.6
Hull construction	Solid	Wetted area	55.42	Limit of positive stability(°)	N/A
Aramid Hull Core	No	IMS L	15.170	Stability Index	N/A
Carbon Rudder	No	LSM0	15.099		
Light stanchions	No	Acc. length	15.995		
Trim tab	No	Sink (kg/mm)	43.17		

PROPELLER

Propeller Type	Folding 3 blades			
Installation	Strut	PRD	0.430	EDL ST3
Twin screw	No	PBW		ST1 ST4
Hydro generator	No	PIPA	0.0007	ST2 ST5

RIG

Forestay tension	Aft	P	20.940	E	7.100
Inner stay	None Fitted	IG	21.100	J	6.400
Carbon mast	No	ISP	22.670	BAS	2.100
Headsail furler	No	MDT1	0.170	FSD	0.052
Mainsail furler	No	MDL1	0.300	SFJ	0.450
Articulated bowsprit	No	MDT2	0.165	SPL	
Non-circular rigging	No	MDL2	0.214	WPL	
Fiber rigging	No	TL	2.250	TPS	6.970
Runners/Checkstays	0	MW	0.300	BD	0.290
Spreaders	3	GO	0.330	MWT	
				MCG	

FLOTATION AND STABILITY

Calculation method	VCG estimated	SFFP	0.293	SAFP	15.415
Flotation Date	01/05/2016	FFM		FAM	
Measurer		FF	1.777	FA	1.366
Comment		LCFcl	8.838	LCFsh	9.160
		SG	1.0260	HBI	1.559



MAINSAIL

<i>Id</i>	<i>MHB</i>	<i>MUW</i>	<i>MTW</i>	<i>MHW</i>	<i>MQW</i>	<i>Area</i>	<i>Meas.Date</i>	<i>Maker</i>	<i>Material</i>	<i>Comment</i>
1	0.18	1.19	2.26	4.16	5.68	82.32	29/04/2016	One sails	Spectra	

HEADSAIL

<i>Id</i>	<i>HHB</i>	<i>HUW</i>	<i>HTW</i>	<i>HHW</i>	<i>HQW</i>	<i>HLP</i>	<i>HLU</i>	<i>Btn</i>	<i>Flying</i>	<i>FT</i>	<i>Area</i>	<i>Meas.Date</i>	<i>Maker</i>	<i>Material</i>	<i>Comment</i>
1	0.06	0.81	1.61	3.31	5.25	6.88	20.88	No	No		71.20	29/04/2016	One sails	Spectra	

ASYMMETRIC SPINNAKER

<i>Id</i>	<i>SLU</i>	<i>SLE</i>	<i>SL</i>	<i>SHW</i>	<i>SFL</i>	<i>Ratio</i>	<i>Area</i>	<i>Meas.Date</i>	<i>Maker</i>	<i>Material</i>	<i>Comment</i>
1	24.02	21.36	22.69	10.65	11.66	91%	205.19	29/04/2016	One sails	Nylon	Orange